

MYPAL Pocket PC

A730W

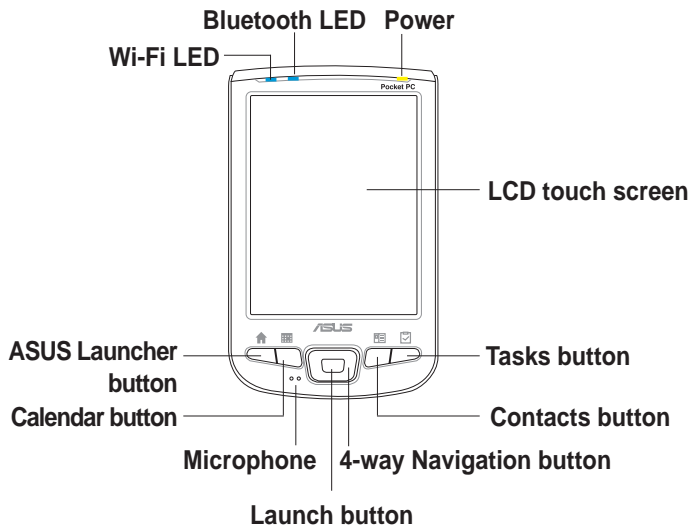
Quick Start Guide



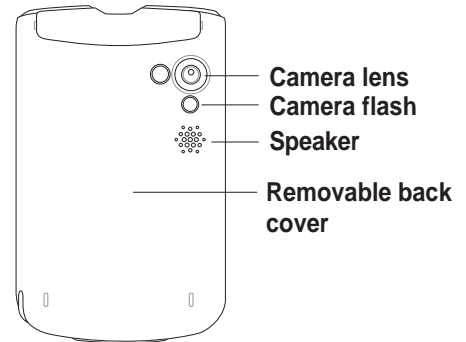
ASUS[®]
www.asus.com

Getting to know MyPal

Front features

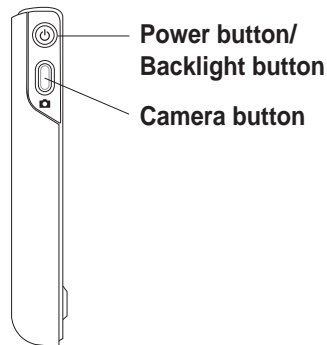


Back features

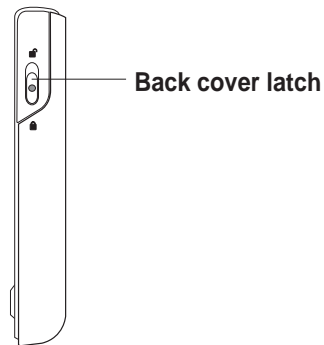


Side features

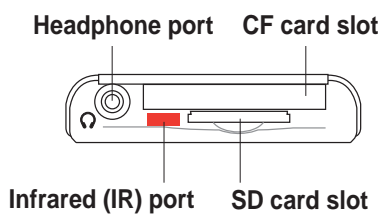
Left side



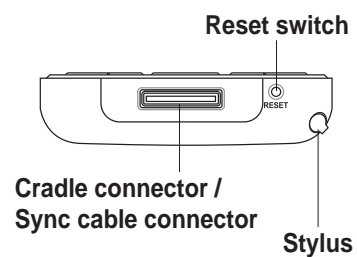
Right side



Top features



Bottom features



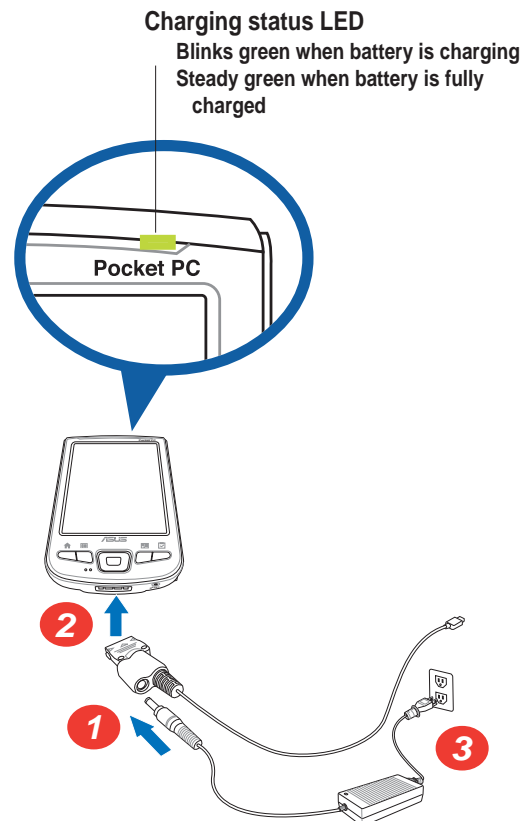
Setting up MyPal

NOTE Install the battery before connecting the AC adapter to a power source. Refer to page 1-10 of the Handbook for proper battery installation.

Without the cradle

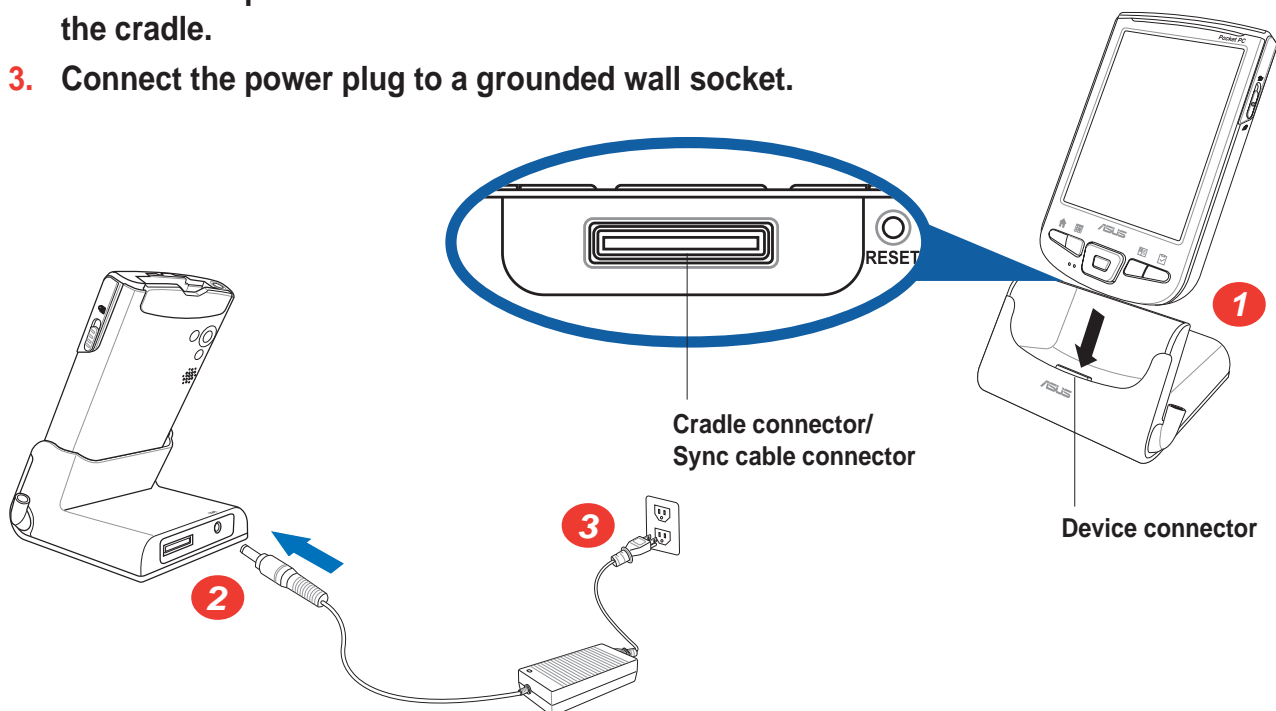
1. Connect the power cable to the jack on the sync cable adapter.
2. Connect the 26-pin device plug of the sync cable to the 26-pin connector on the bottom of the device.
3. Connect the power plug to a grounded wall socket.

NOTE The charging status LED blinks green.



When using the cradle

1. Place the device on the cradle.
2. Connect the power cable to the connector at the back of the cradle.
3. Connect the power plug to a grounded wall socket.



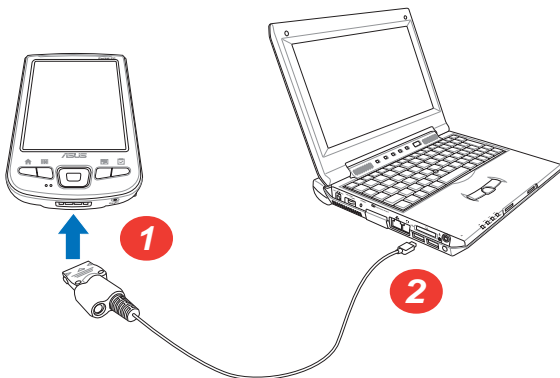
Synchronizing MyPal

Use the Companion CD to install the Microsoft® ActiveSync® on your desktop computer. ActiveSync is already installed on your device.

NOTE Do not connect your device to your computer until you have installed ActiveSync.

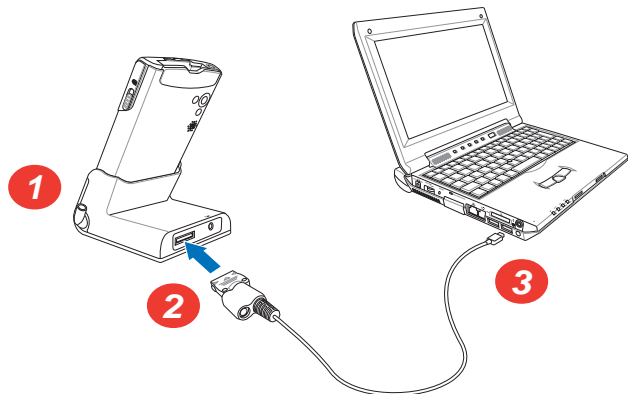
A Without the cradle

1. Connect the flat plug of the USB sync cable to the connector on the bottom of the device.
2. Connect the USB plug to a USB port on your computer.



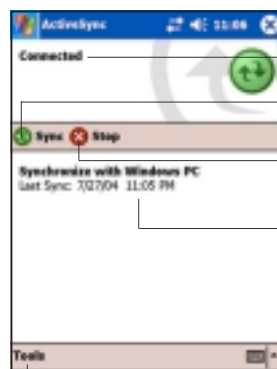
B When using the cradle

1. Place the device on the cradle.
2. Connect the flat plug of the USB sync cable to the connector at the back of the cradle.
3. Connect the USB plug to a USB port on your computer.



Upon connection, your device is automatically synchronized with your computer.

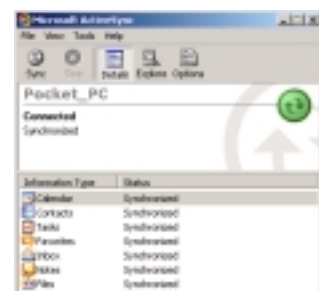
Synchronization status on MyPal



- Connection status
- Tap to connect and synchronize
- Tap to stop synchronization
- Synchronization information

Tap to synchronize via IR or change synchronization settings

Synchronization status on your computer

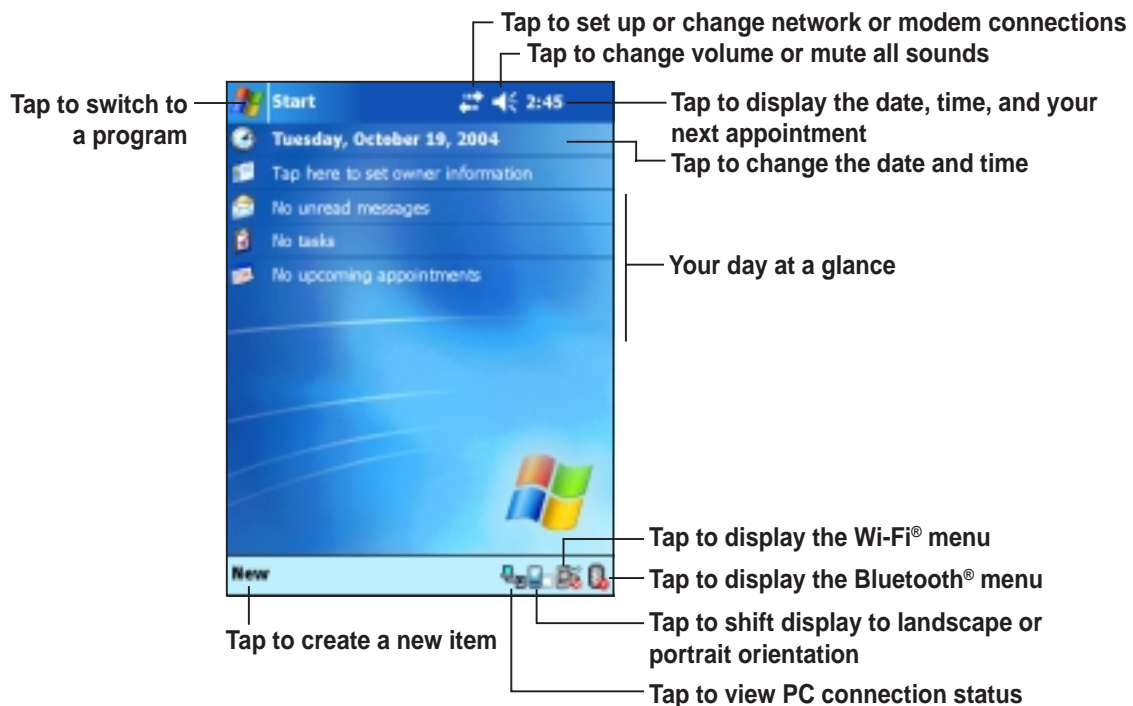


Pocket PC Software

Your device bundles the Pocket PC 2003 Second Edition which includes several applications such as Microsoft® Pocket Outlook, Pocket Word, Pocket Excel, MSN Messenger, Windows® Media Player, and Internet Explorer.

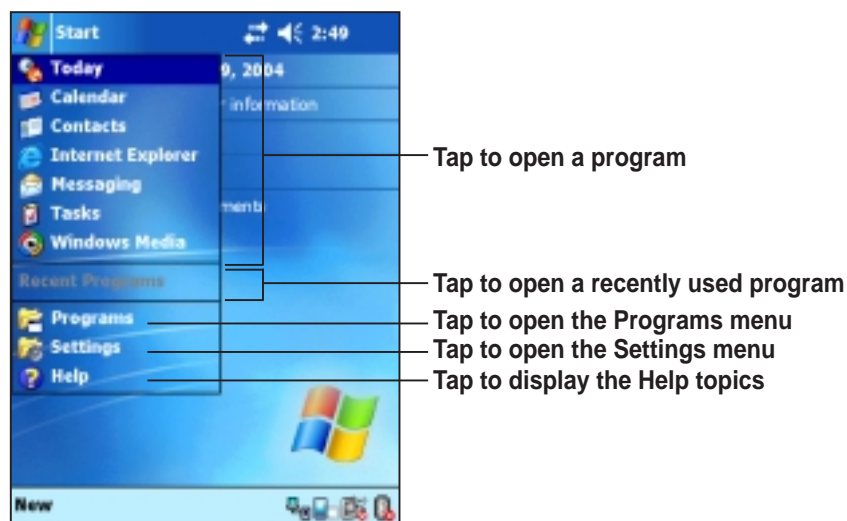
Today screen

The Today screen appears when you turn on your device. The Today screen gives you a summary of the important information for the day. Tap any of the listed items with the stylus to display the details.



Start menu

From the Start menu, you can select programs, settings, and Help topics. To display the Start menu, tap the  icon from the top of the screen.

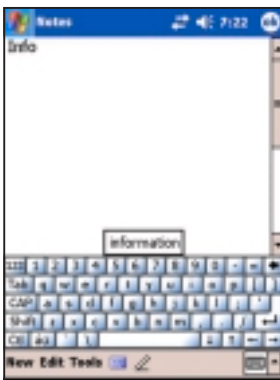


MyPal basics

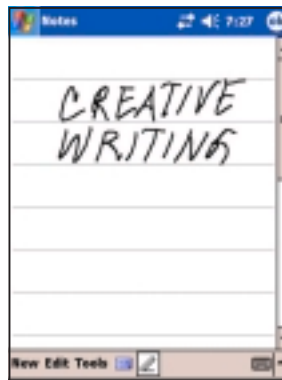
Use any one of the following ways to enter information on your device

- **Typing** Tap the arrow on the lower right corner of the screen, select Keyboard.
- **Writing** Tap the Pen button on the command bar, use the stylus to write.
- **Drawing** Tap the Pen button on the command bar, use the stylus to draw.
- **Recording** Press the Record button on the side of the device, or tap the Record button on the recording toolbar.

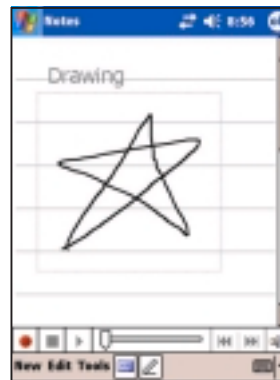
Typing



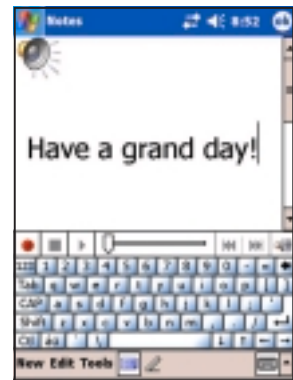
Writing



Drawing



Recording



Reference information

Refer to the following sources of additional information for the ASUS MyPal A730W

Operation MyPal A730W handbook

Online Help Windows® Pocket PC Help (*on your device*)
ActiveSync® Help (*on your computer*)

Web sites and technical support

Technical support: +886-2-2894-3447 ext. 7122

Support Fax: +886-2-2890-7698

Support e-mail: tsd@asus.com.tw

Web site: www.asus.com.tw

Software download: download.asus.com.tw

Pocket PC web site: www.microsoft.com/mobile/pocketpc