

ASUSTeK COMPUTER INC.	A63x Assembly & Disassembly Guide	Doc. No:	
		Date:	
		Revision:	
		Page:	Grade:

Rev.	Modification	Modify description	Issue div.	Originator
V101	English	1 X #1 Phillips-head Screwdriver		Jonathan
V101	English	1 X T-5 Torx Screwdriver		
V101	English	1 X Plastic Knife		

Purpose :

This SOP is separated into three parts : (1)Overview(2) Disassembly(3) Assembly ◦
This purpose of this SOP is to help engineer assemble & disassemble more easily ◦

1. Overview



2. Disassembly

1. Remove SD card (PIC1.1, PIC1.2)

Authorize by		Review by		Originator by	Jonathan
-----------------	--	--------------	--	------------------	----------



PIC1.1



PIC1.2

2. Remove the battery cover by pressing the release button and pull back. (PIC2.1)



PIC2.1

3. Remove the battery. (PIC3.1, PIC3.2)



PIC3.1



PIC3.2

4. Remove Stylus. (PIC4.1, PIC 4.2)



PIC4.1



PIC4.2

5. Remove 5 screws (PIC5.1)



PIC5.1

6. Separate the retaining hook with plastic knife. (PIC6.1, PIC6.2)



PIC6.1



PIC6.2

7. Slowly pull up connector cable (PIC7.1, PIC7.2)



PIC7.1



PIC7.2

8. Remove 1 screw and hinge (PIC8.1, PIC8.2)



PIC8.1



PIC8.2

9. Remove GPS module (PIC9.1, PIC9.2)



PIC9.1



PIC9.2

10. Remove 2 screws and both cover (PIC10.1, PIC10.2, PIC10.3)



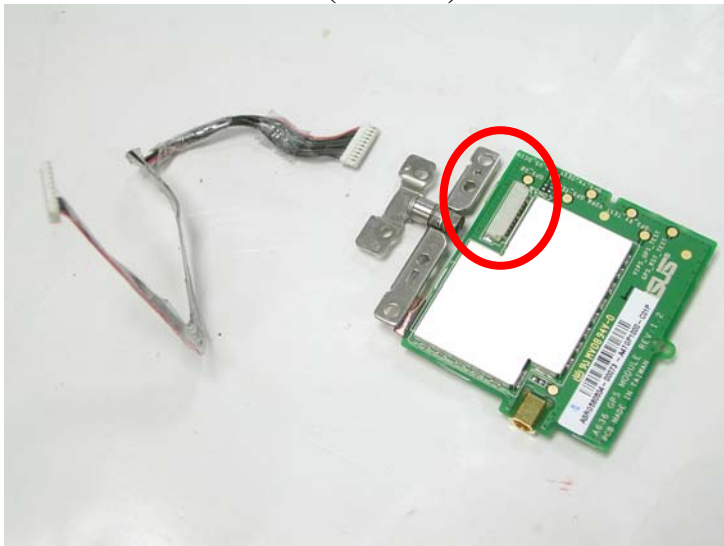
PIC10.1

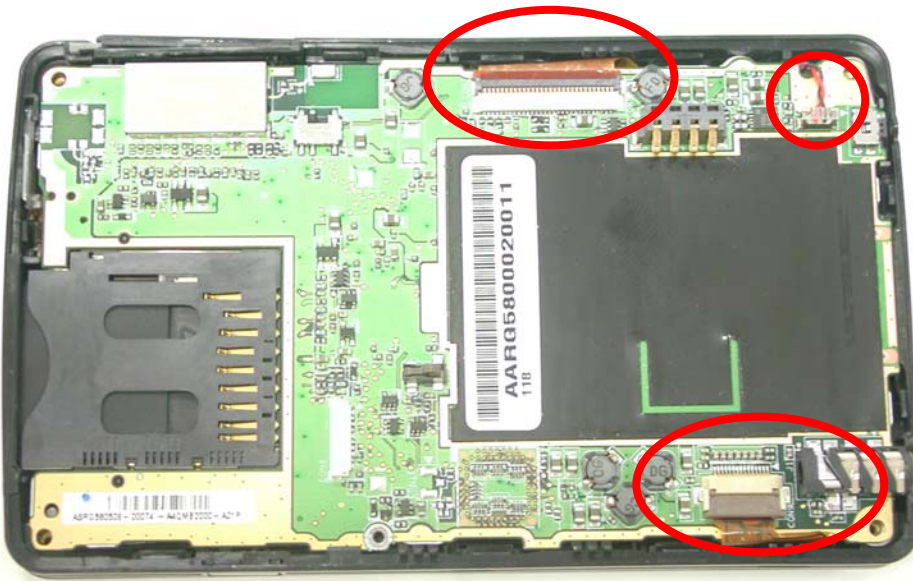


PIC10.2

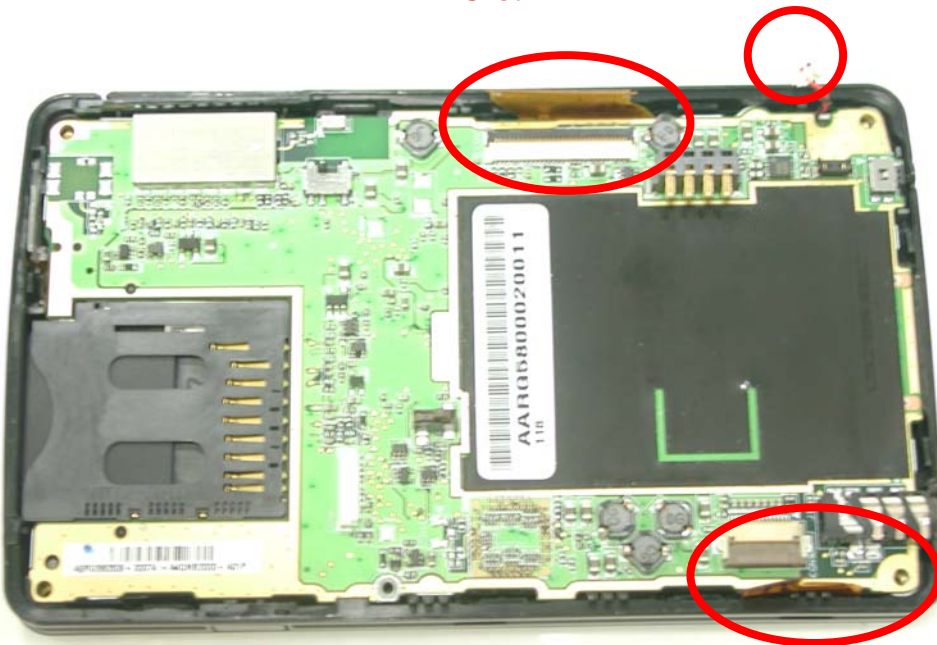


PIC10.3

11. Remove top and bottom cover of GPS module. (PIC11.1, PIC11.2)**PIC11.1****PIC11.2****12. Remove cable here. (PIC12.1)****PIC12.1****13. Remove LCD FPC, KEYPAD FPC and Audio connector. (PIC13.1, PIC13.2)**

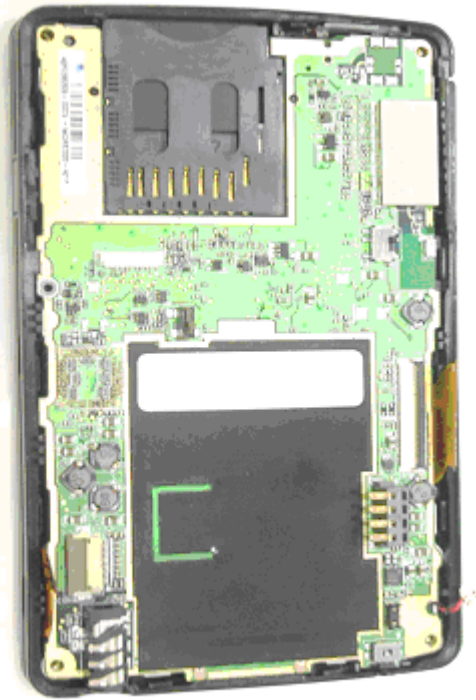


PIC13.1



PIC13.2

14. Remove the main board module. (PIC14.1, PIC14.2)



PIC14.1



PIC14.2

15. Remove 2 screws and speaker holder (PIC15.1, PIC15.2)



PIC15.1



PIC15.2

16. Remove Speaker (PIC16.1, PIC16.2)



PIC16.1



PIC16.2

17. Remove Keypad module. (PIC17.1, PIC17.2)



PIC17.1



PIC17.2

18. Remove Keypad (PIC18.1, PIC18.2)



PIC18.1



PIC18.2

19. Remove LCD (PIC19.1, PIC19.2)



PIC19.1



PIC19.2

3. Assembly

1. Assemble LCD (PIC1.1, PIC1.2)



PIC1.1



PIC1.2

2. Assemble Keypad (PIC2.1, PIC2.2)



PIC2.1



PIC2.2

3. Assemble Keypad module. (PIC3.1, PIC3.2)



PIC3.1



PIC3.2

4. Assemble Speaker (PIC4.1, PIC4.2)

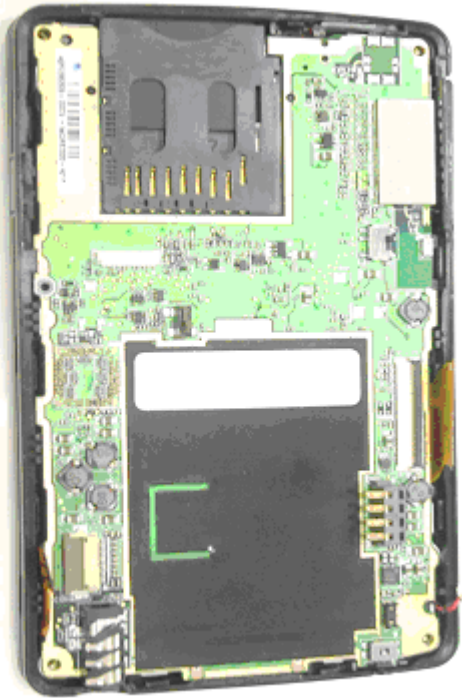


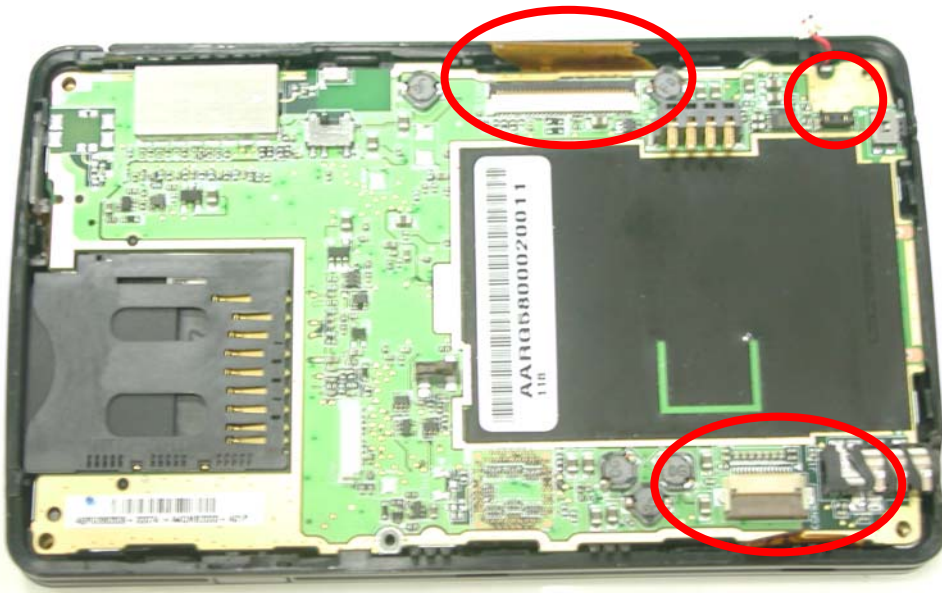
PIC4.1



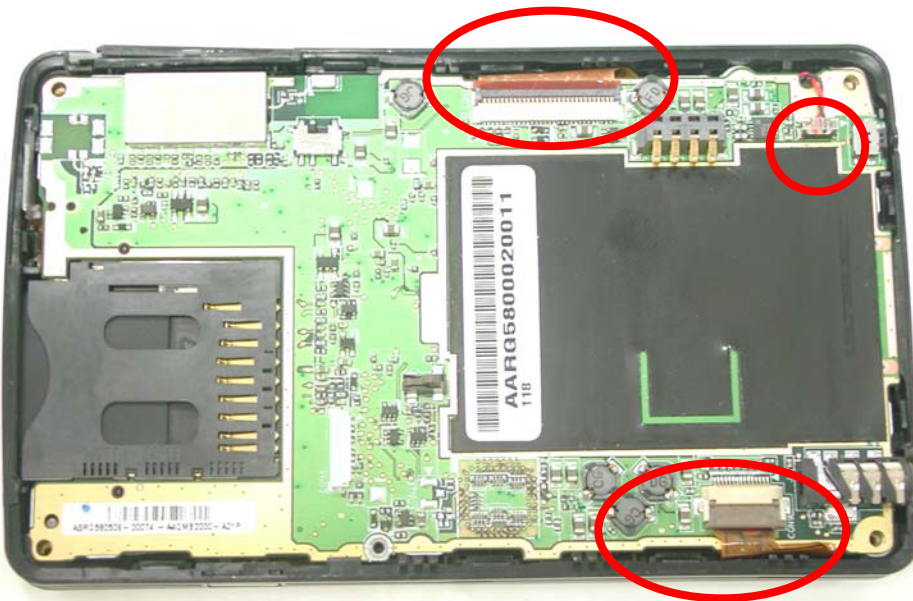
PIC4.2

5. Assemble speaker holder and 2 screws (PIC5.1, PIC5.2)

**PIC5.1****PIC5.2****6. Assemble the main board module. (PIC6.1, PIC6.2)****PIC6.1****PIC6.2****7. Assemble LCD FPC, KEYPAD FPC and Audio connector. (PIC7.1, PIC7.2)**

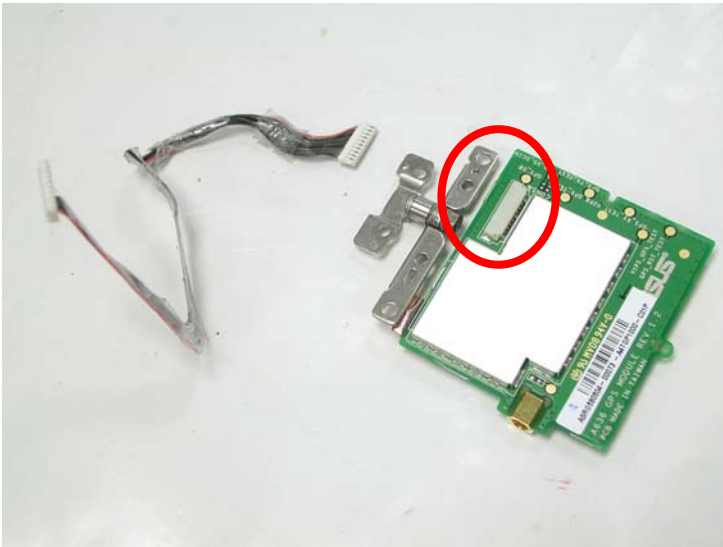


PIC7.1



PIC7.2

8. Assemble cable here. (PIC8.1)



PIC8.1

9. Assemble top and bottom cover of GPS module. (PIC9.1, PIC9.2)



PIC9.1



PIC9.2

10. Remove 2 screws and both cover (PIC10.1, PIC10.2, PIC10.3)



PIC10.1



PIC10.2



PIC10.3

11. Assemble GPS module (PIC11.1, PIC11.2)



PIC11.1



PIC11.2

12. Assemble hinge and screw (PIC12.1, PIC12.2)



PIC12.1



PIC12.2

13. Slowly insert connector cable (PIC13.1, PIC13.2)



PIC13.1



PIC13.2

14. Assemble the cover and secure 5 screws (PIC14.1, PIC14.2)



PIC14.1



PIC14.2

15. Assemble Stylus (PIC15.1, PIC 15.2)



PIC15.1



PIC15.2

16. Insert the battery. (PIC16.1, PIC16.2)



PIC16.1



PIC16.2

17. Assemble battery cover (PIC17.1)



PIC17.1

18. Insert SD card (PIC18.1, PIC18.2)



PIC18.1



PIC18.2